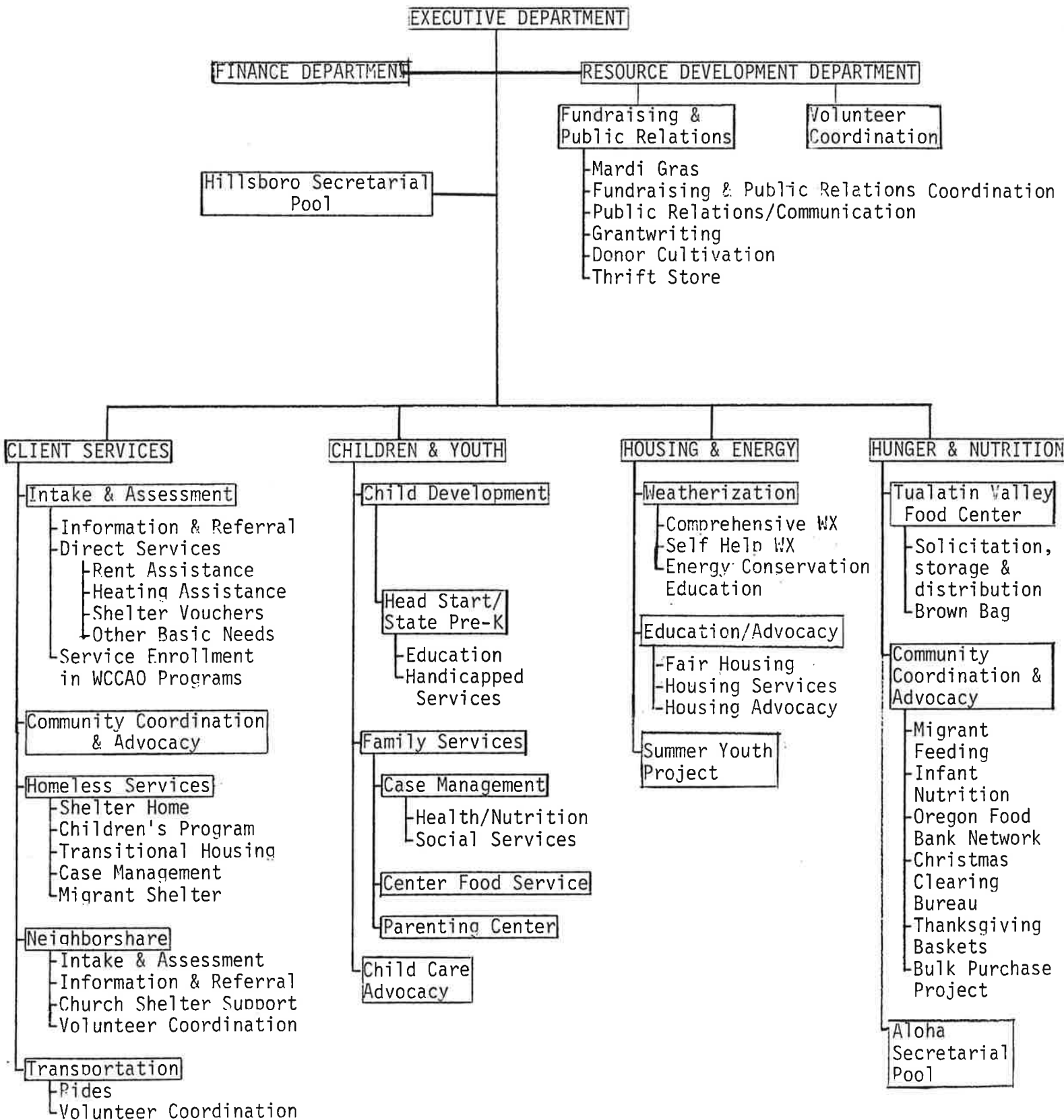


1989-90 WCCAO ORGANIZATION CHART (PROGRAM)



WASHINGTON COUNTY COMMUNITY ACTION ORGANIZATION

Self-Sufficiency Program

- Client identification & enrollment & outreach
- Family needs assessment & barrier identification
- Family goal setting & service plan
- Linking up with needed services including support groups, emergency & basic needs, education & training
- Monitoring & advocacy
- Reassessment of family progress

Homeless Families

- Hillsboro Shelter Home (125)
 (3 weeks)
- Tigard Christian Ministries Shelter (70)
 (3 weeks)
- Transitional Housing (12)
 (3-6 months)

Low Income Families

- Head Start Parents (180)
 - 8 months
- New Directions Enrollees (120)
 - 3-9 months
- Partnership Project Enrollees (40)
 - 18 months
 - 50% Hispanic

1990-1991 Organization Chart

WCCAO BOARD OF DIRECTORS

Executive Director

Finance Department

Resource Development Department

Housing & Energy Department

- Weatherization
- Fair Housing
- Energy Education
- Special Housing Services
- Affordable Housing Advocacy

Hunger & Nutrition Department

- TVFC: County-wide Food Bank
- Brown Bag: Self Help Project
- Holiday Food Basket Coord.
- Migrant Food Coordination

Child Development Department

- Head Start
- State Pre-K
- Child Care Vouchers
- Child Advocacy
- Parenting Classes

Family Services Department

- Information & Referral
- Intake & Assessment for all WCCAO Prog.
- Emergency & Basic Needs Services
- Transportation
- Homeless Services
 - Shelter
 - Transitional Housing
 - Children's Support
- Self Sufficiency
 - DPP
 - Homeless Case Management

1990-1991 Organization Chart

WCCAO BOARD OF DIRECTORS

Executive Director

Finance Department

Resource Development Department

Housing & Energy Department

- Weatherization
- Fair Housing
- Energy Education
- Special Housing Services
- Affordable Housing Advocacy

Hunger & Nutrition Dept.

- TVFC: County-wide Food Bank
- Brown Bag: Self Help Project
- Holiday Food Basket Coord.
- Migrant Food Coordination

Child Development Dept.

- Head Start
- State Pre-K
- Child Care Development
- Child Advocacy
- Parenting Services

Family Services

- Information & Referral
- Intake & Assessment for all WCCAO Prog.
- Emergency & Basic Needs Services
 - Heating Asst.
 - Rent Asst.
 - Transportation
- Homeless Services
 - Shelter
 - Transitional Housing
 - Children's Programs
- Family Development
 - Homeless Case Management
 - Head Start Case Management
 - Demonstration Partnership Project

Portland Community College: New Directions

- Dept. of Labor
- Dept. of Education
- Private Industry Council
- Housing Authority
- Kaiser Permanente
- Private Foundations

- Hispanic job readiness prep.
- Mentors
- New Directions Case Mngmnt.

1990-1991 Organization Chart

WCCAO BOARD OF DIRECTORS

Executive Director

Finance Department

Resource Development Department

Housing & Energy Department

- Weatherization
- Fair Housing
- Energy Education
- Special Housing Services
- Affordable Housing Advocacy

Hunger & Nutrition Department

- TVFC: County-wide Food Bank
- Brown Bag: Self Help Project
- Holiday Food Basket Coord.
- Migrant Food Coordination

Family & Child Development Department

- Head Start
- State Pre-K
- Child Care Development
- Child Advocacy
- Parenting Classes
- Self-Sufficiency Project

Intake & Basic Needs Department

- Information & Referral
- Intake & Assessment for all WCCAO Prog.
- Emergency & Basic Needs Services
- Transportation
- Homeless Services
 - Shelter
 - Transitional Housing
 - Children's Support

1990-1991 Organization Chart

WCCAO BOARD OF DIRECTORS

Executive Director

Finance Department

Resource Development Department

Housing & Energy Department

- Weatherization
- Fair Housing
- Energy Education
- Special Housing Services
- Affordable Housing Advocacy

Hunger & Nutrition Dept.

- TVFC: County-wide Food Bank
- Brown Bag: Self Help Project
- Holiday Food Basket Coord.
- Migrant Food Coordination

Child Development Dept.

- Head Start
- State Pre-K
- Child Care Development
- Child Advocacy

Portland Community College:
New Directions

- Dept. of Labor
- Dept. of Education
- Private Industry Council
- Housing Authority
- Kaiser Permanente
- Private Foundations

Family Development

- Parenting Services
- Homeless Case Management
- Head Start Case Management

Demonstration Partnership Project

- Hispanic job readiness prep.
- Mentors
- New Directions Case Management

Client Services

- Information & Referral
- Intake & Assessment for all WCCAO Prog.
- Emergency & Basic Needs Services
 - Heating Asst.
 - Rent Asst.
 - Transportation

Homeless Services

- Shelter
- Transitional Housing
- Children's Programs

1990-1991 Organization Chart

WCCAO BOARD OF DIRECTORS

Executive Director

Finance Department

Resource Development Department

Housing & Energy Department

- Weatherization
- Fair Housing
- Energy Education
- Special Housing Services
- Affordable Housing Advocacy

Hunger & Nutrition Dept.

- TVFC; County-wide Food Bank
- Brown Bag: Self Help Project
- Holiday Food Basket Coord.
- Migrant Food Coordination

Child Development Dept.

- Head Start
- State Pre-K
- Child Care Development
- Child Advocacy
- Parenting Services

Family Development

- Homeless Case Management
- Head Start Case Management
- Demonstration Partnership Project
 - Hispanic job rediness prep.
 - Mentors
 - New Directions Case Management
- Homeless Farmworker Family Case Management

Client Services Dept.

- Information & Referral
- Intake & Assessment for all WCCAO Prog.
- Emergency & Basic Needs Services
 - Heating Asst.
 - Rent Asst.
 - Transportation
- Homeless Services
 - Shelter
 - Transitional Housing
 - Children's Programs

1991-1992 ORGANIZATION CHART

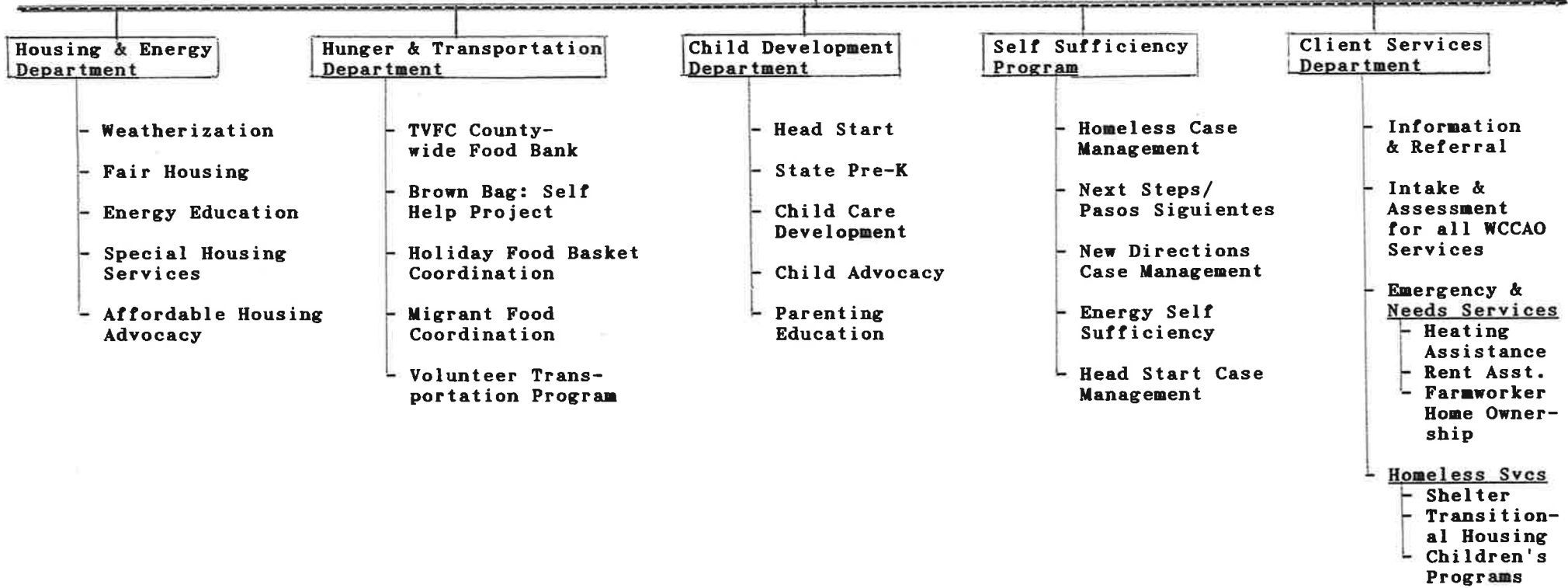
WCCAO Board of Directors

Executive Director

Finance Department

Resource Development Department

Revised April 1991



1991-1992 ORGANIZATION CHART

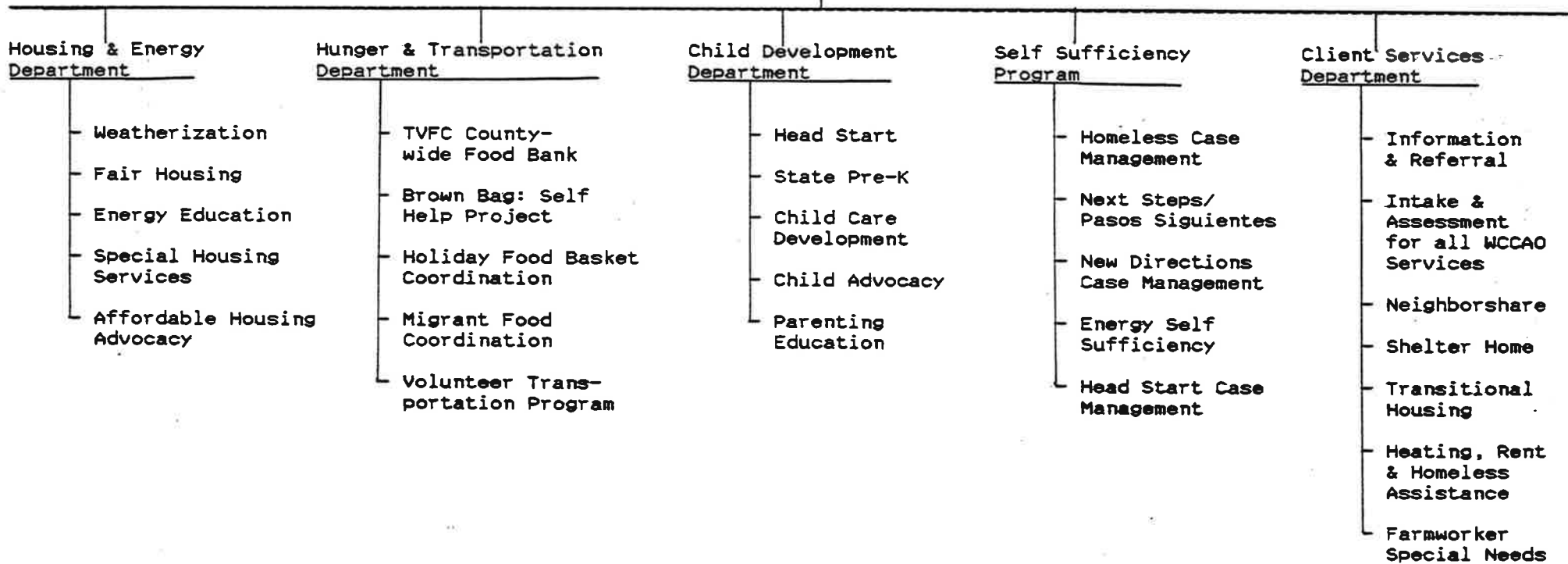
WCCAO Board of Directors

Executive Director

Finance Department

Resource Development Department

Revised May 1991



1991-1992 ORGANIZATION CHART

WCCAO Board of Directors

Executive Director

Finance Department

Resource Development Department

Housing & Energy
Department

- Weatherization
- Fair Housing
- Energy Education
- Special Housing Services
- Affordable Housing Advocacy

Hunger & Transportation
Department

- TVFC County-wide Food Bank
- Brown Bag: Self Help Project
- Holiday Food Basket Coordination
- Migrant Food Coordination
- Volunteer Transportation Program

Child Development
Department

- Head Start
- State Pre-K
- Child Care Development
- Child Advocacy
- Parenting Education

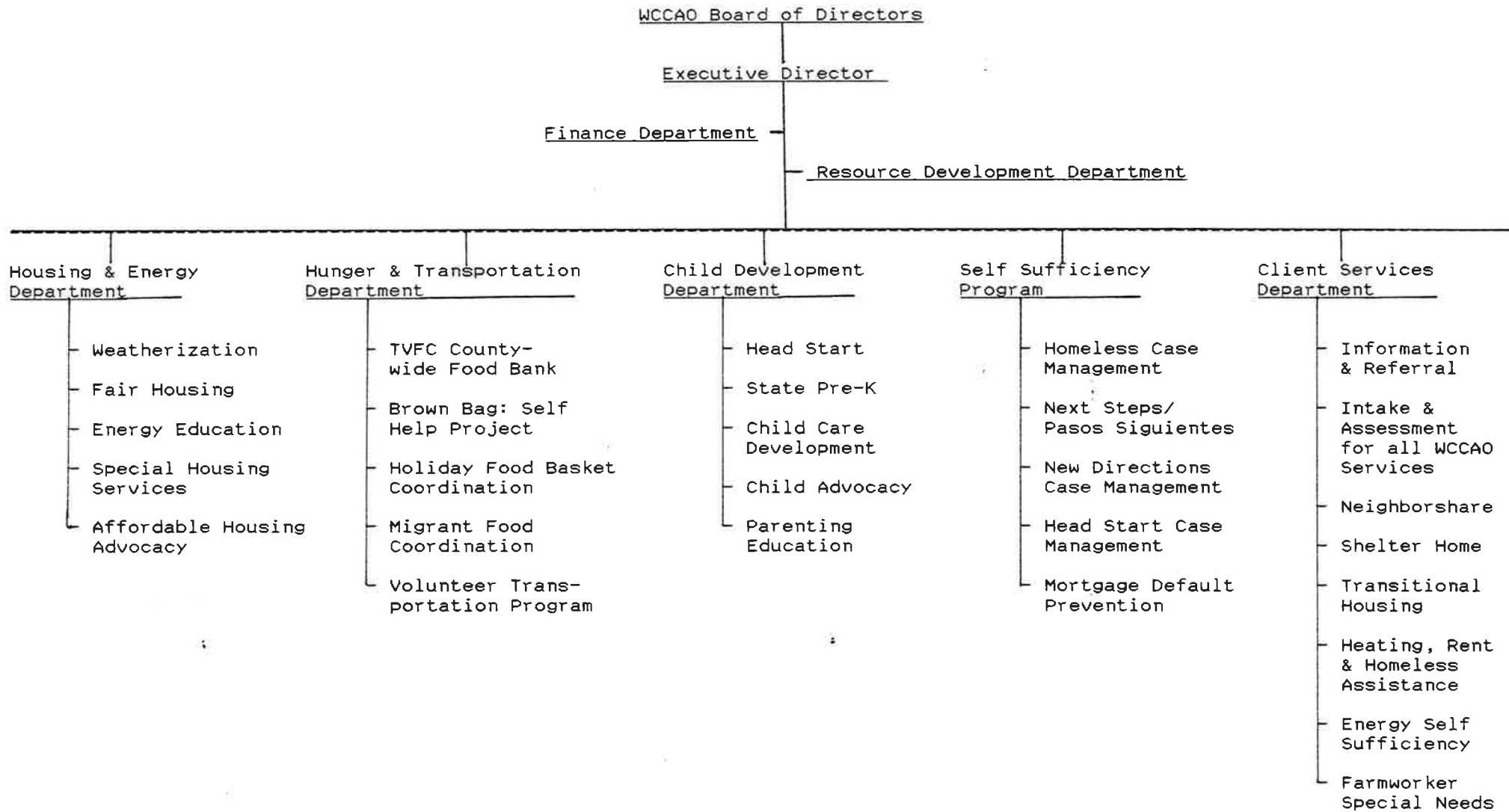
Self Sufficiency
Program

- Homeless Case Management
- Next Steps/
Pasos Siguintes
- New Directions Case Management
- Head Start Case Management

Client Services
Department

- Information & Referral
- Intake & Assessment for all WCCAO Services
- Neighborshare
- Shelter Home
- Transitional Housing
- Heating, Rent & Homeless Assistance
- Energy Self Sufficiency
- Farmworker Special Needs

1991-1992 ORGANIZATION CHART



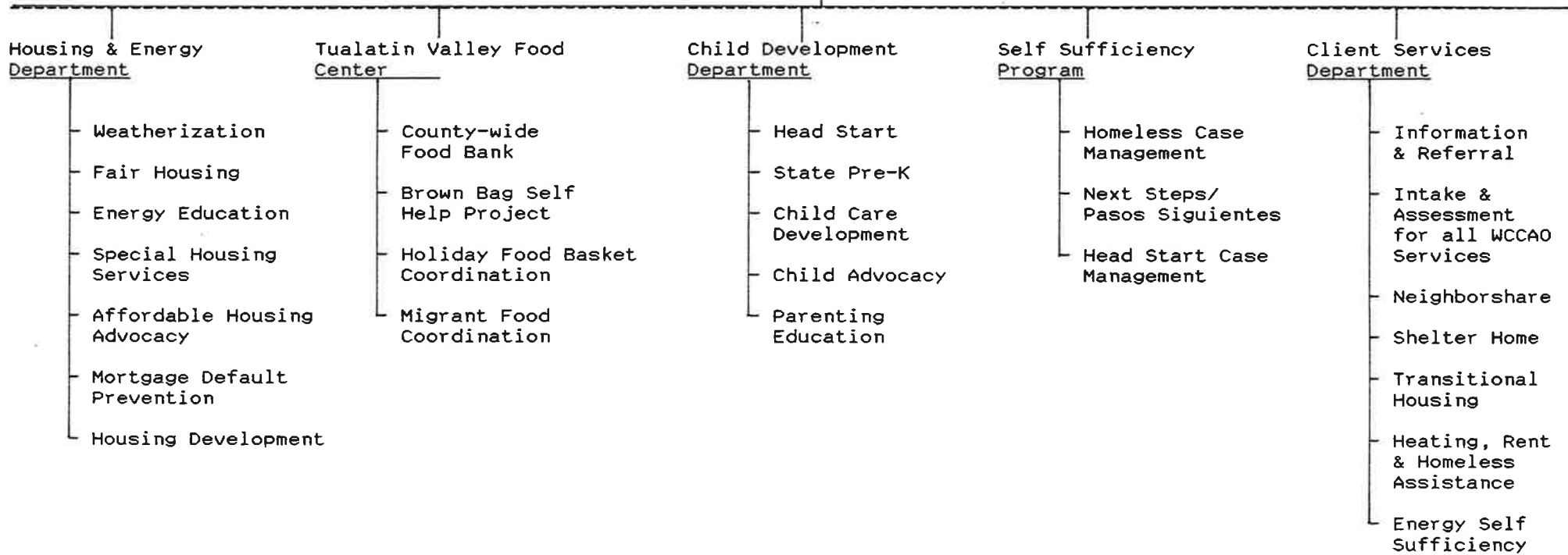
1992-1993 ORGANIZATION CHART

WCCAO Board of Directors

Executive Director

Finance Department

Resource Development Director



1992-1993 ORGANIZATION CHART

WCCAO Board of Directors

Executive Director

Finance Department -

- Resource Development Department

Housing & Energy
Department

- Weatherization
- Fair Housing
- Energy Education
- Special Housing Services
- Affordable Housing Advocacy
- Mortgage Default Prevention
- Housing Development

Tualatin Valley Food
Center

- County-wide Food Bank
- Brown Bag Self Help Project
- Holiday Food Basket Coordination
- Migrant Food Coordination

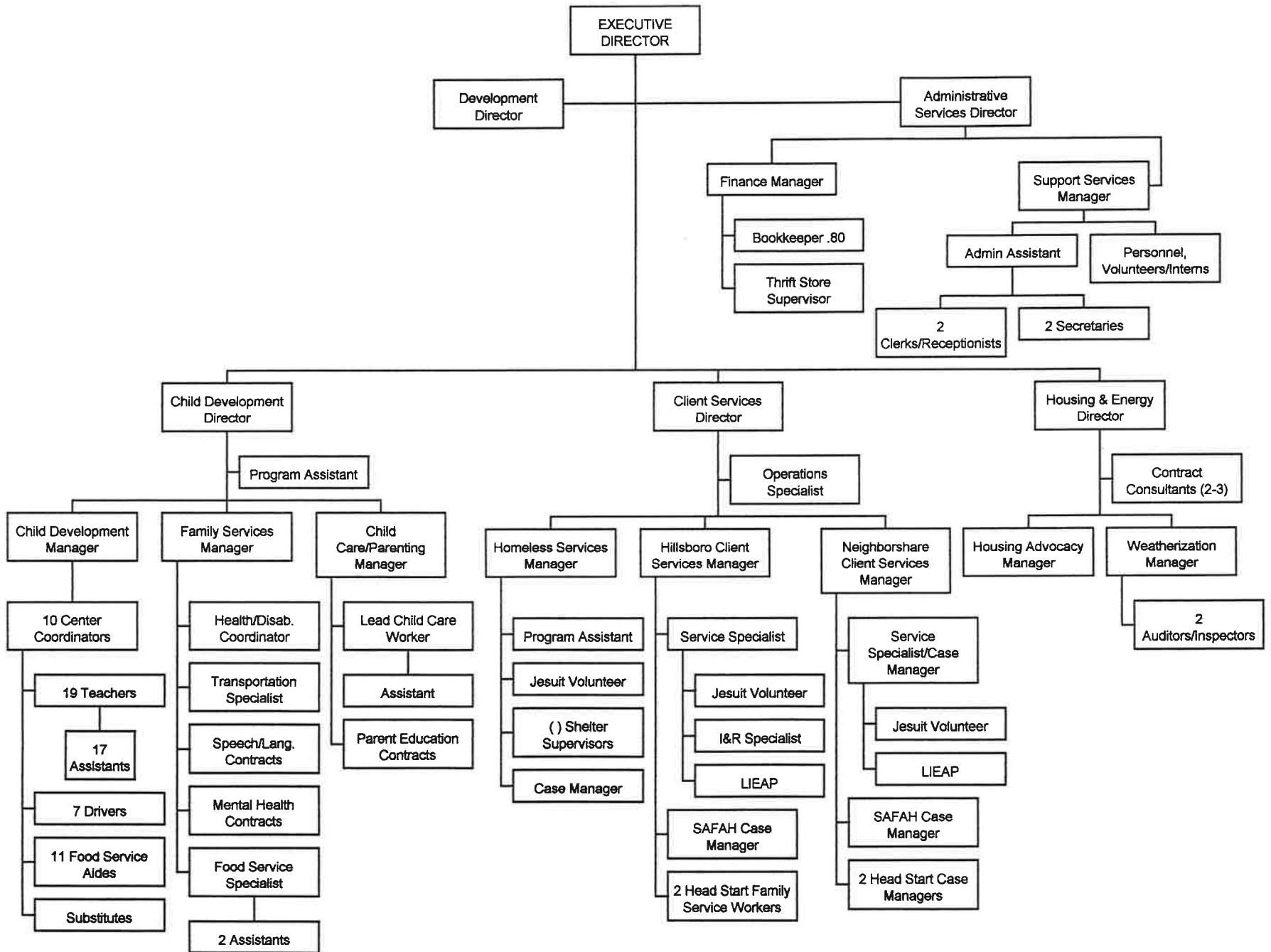
Child Development
Department

- Head Start
- State Pre-K
- Child Care Development
- Child Advocacy
- Parenting Education
- Self Sufficiency Program

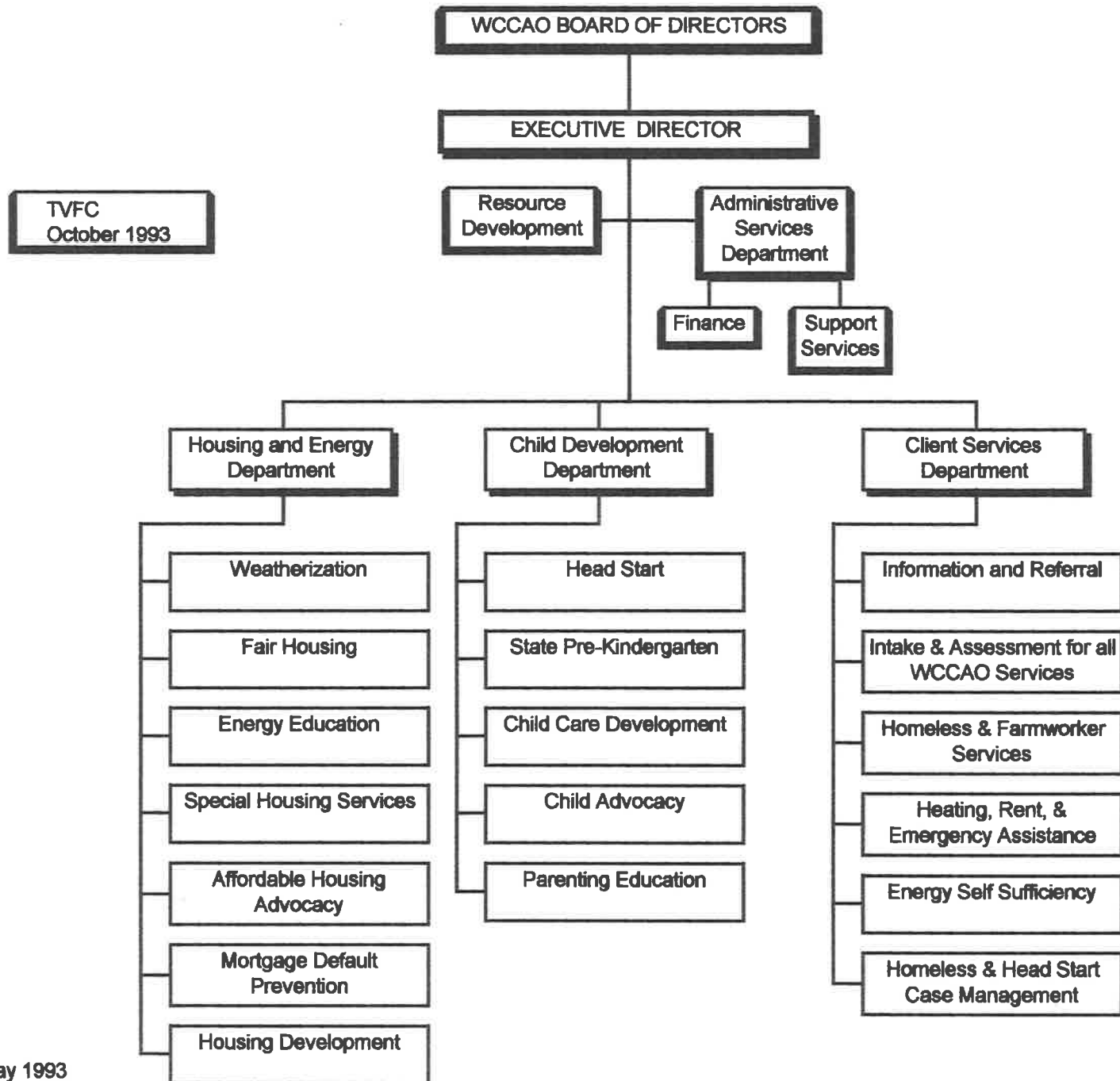
Client Services
Department

- Information & Referral
- Intake & Assessment for all WCCAO Services
- Neighborshare
- Shelter Home
- Transitional Housing
- Heating, Rent & Homeless Assistance
- Energy Self Sufficiency

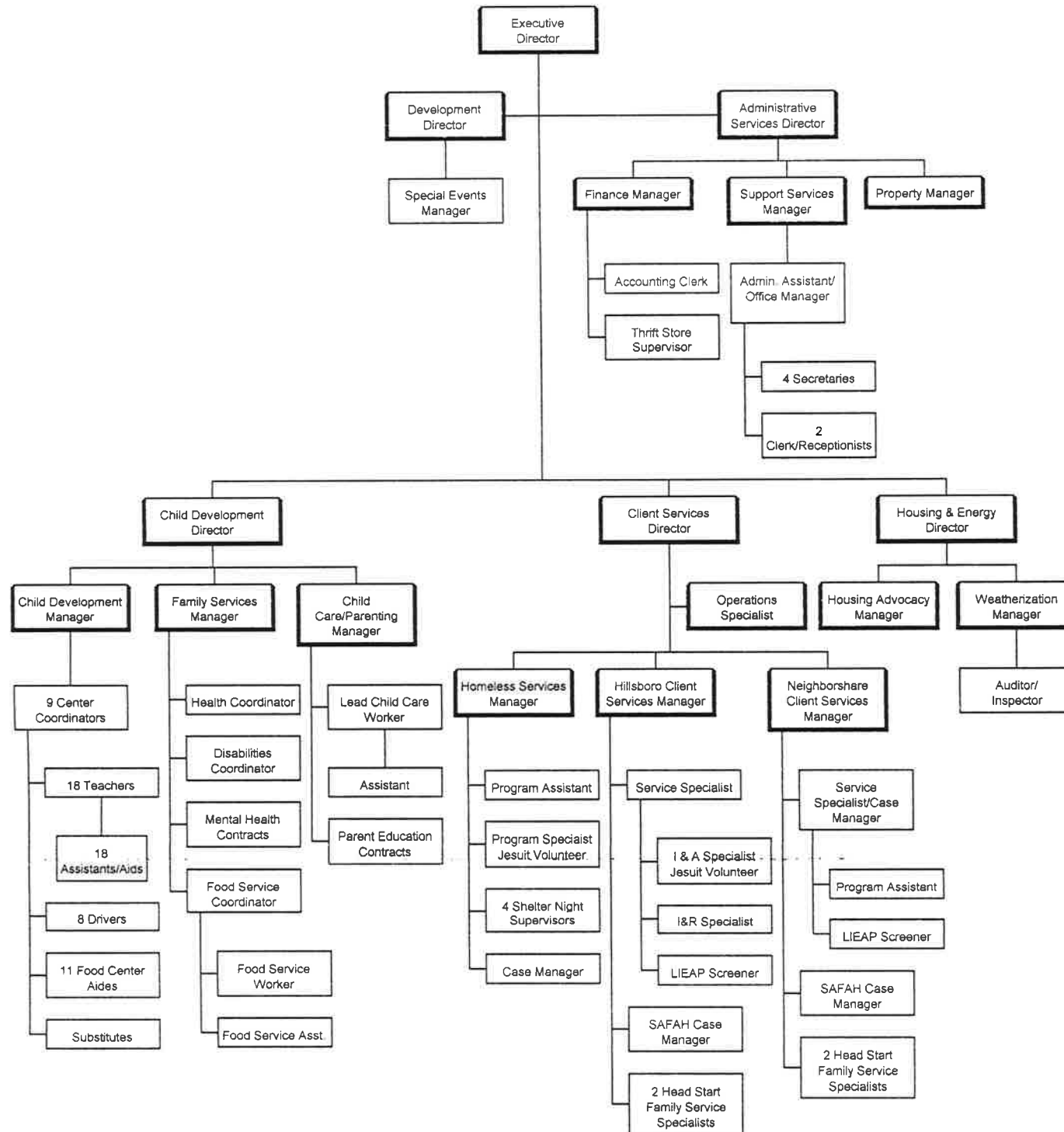
1993-1994 PROPOSED ORGANIZATION CHART



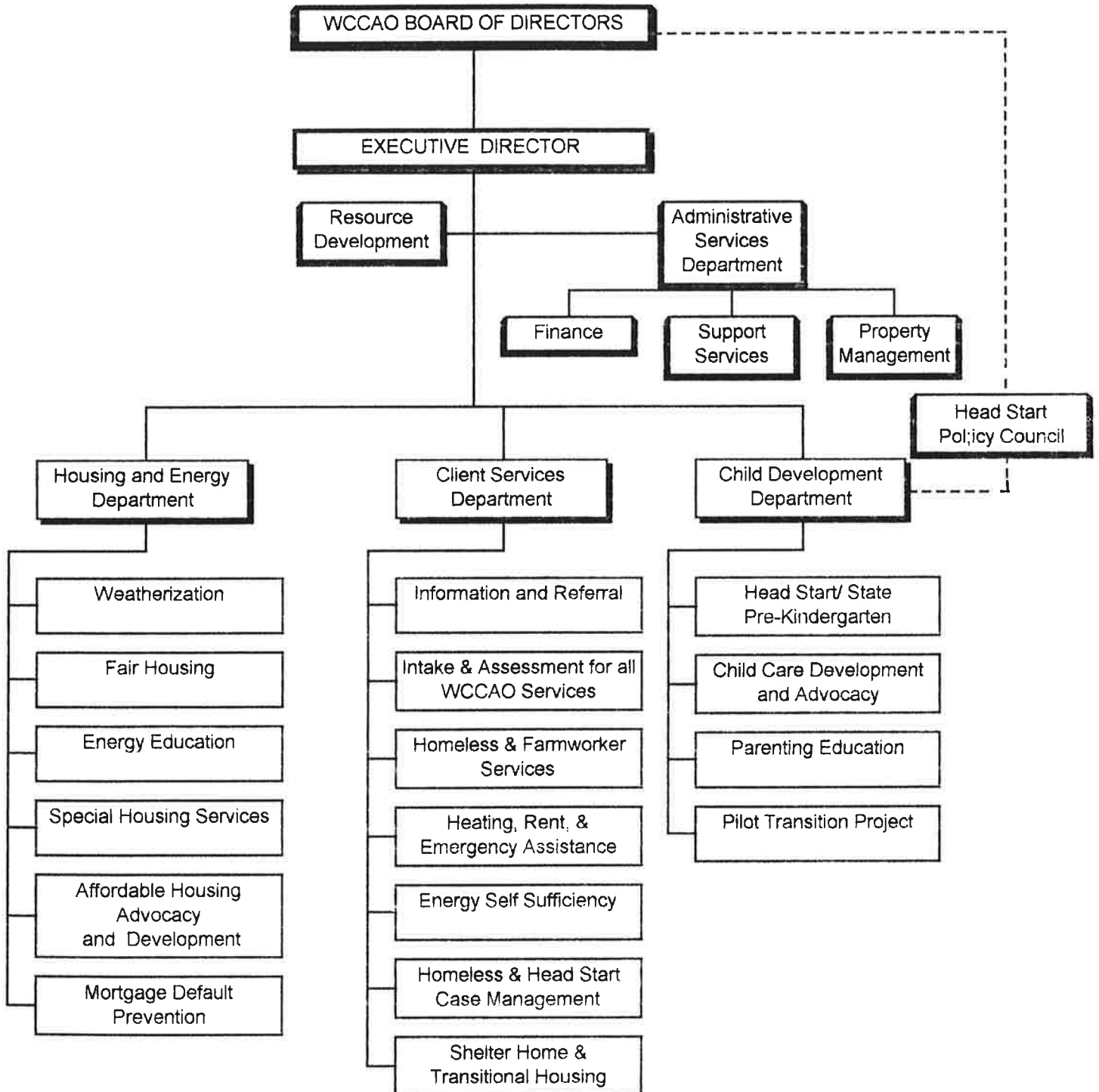
1993-1994 ORGANIZATION CHART



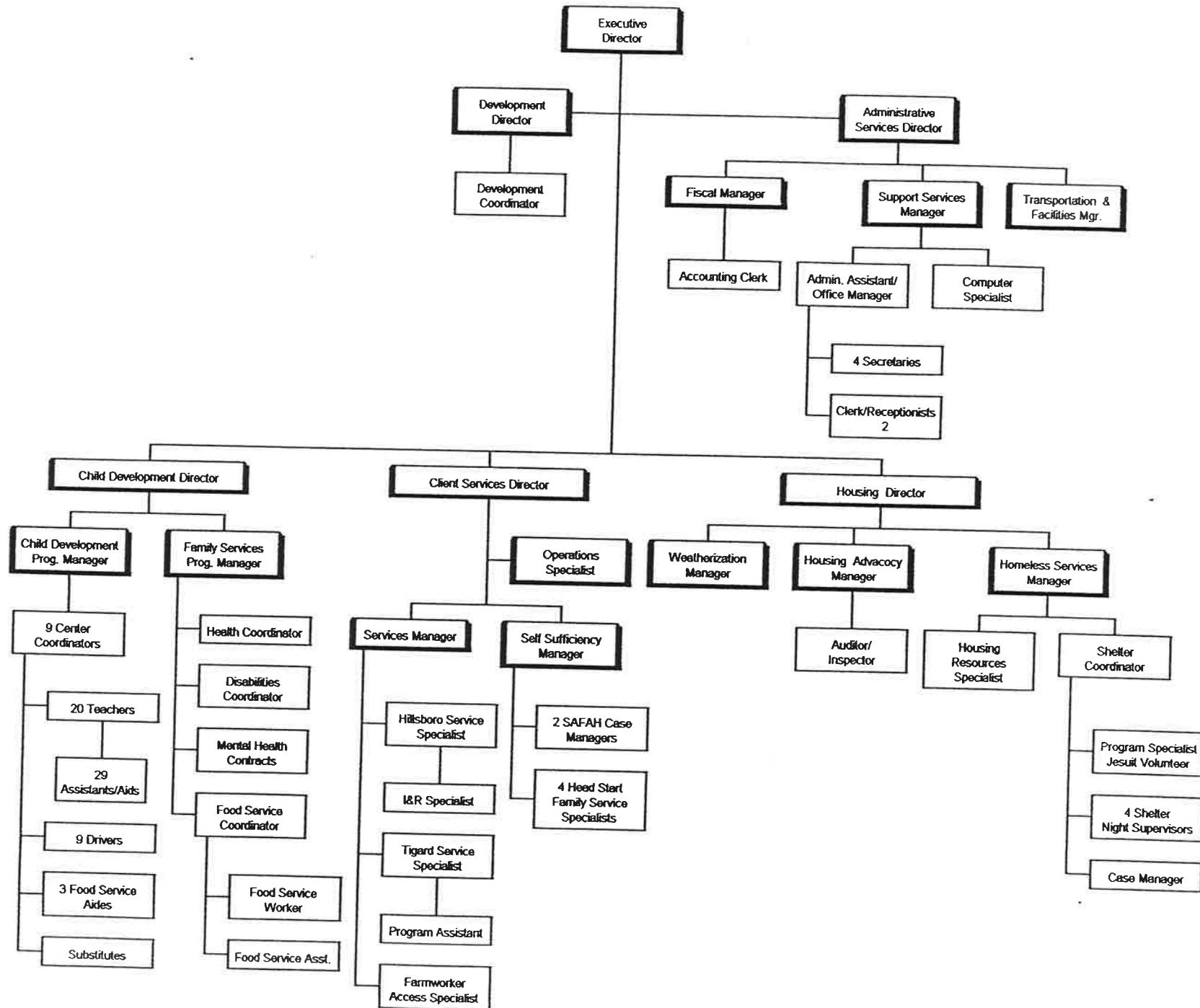
1994-1995 STAFF ORGANIZATION CHART



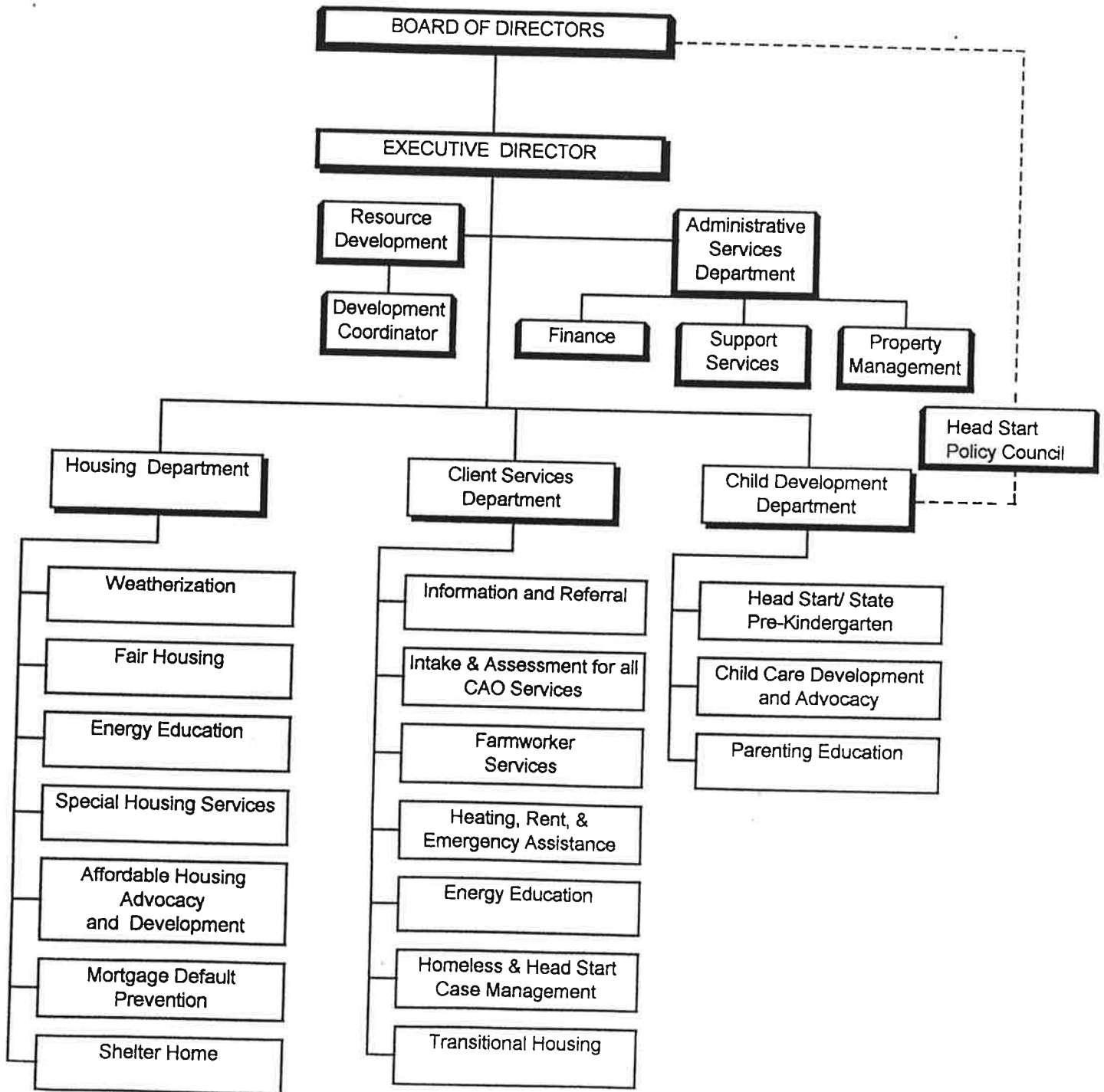
1994-1995 ORGANIZATION CHART



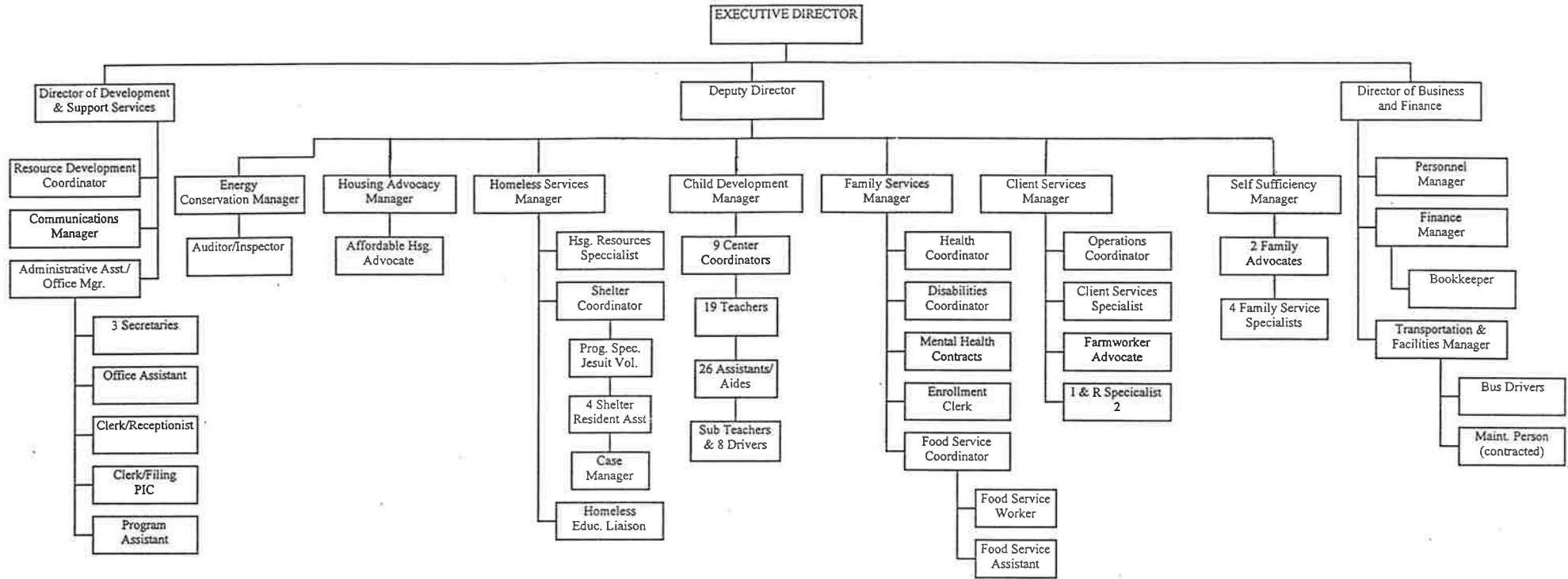
1995-1996 STAFF ORGANIZATION CHART



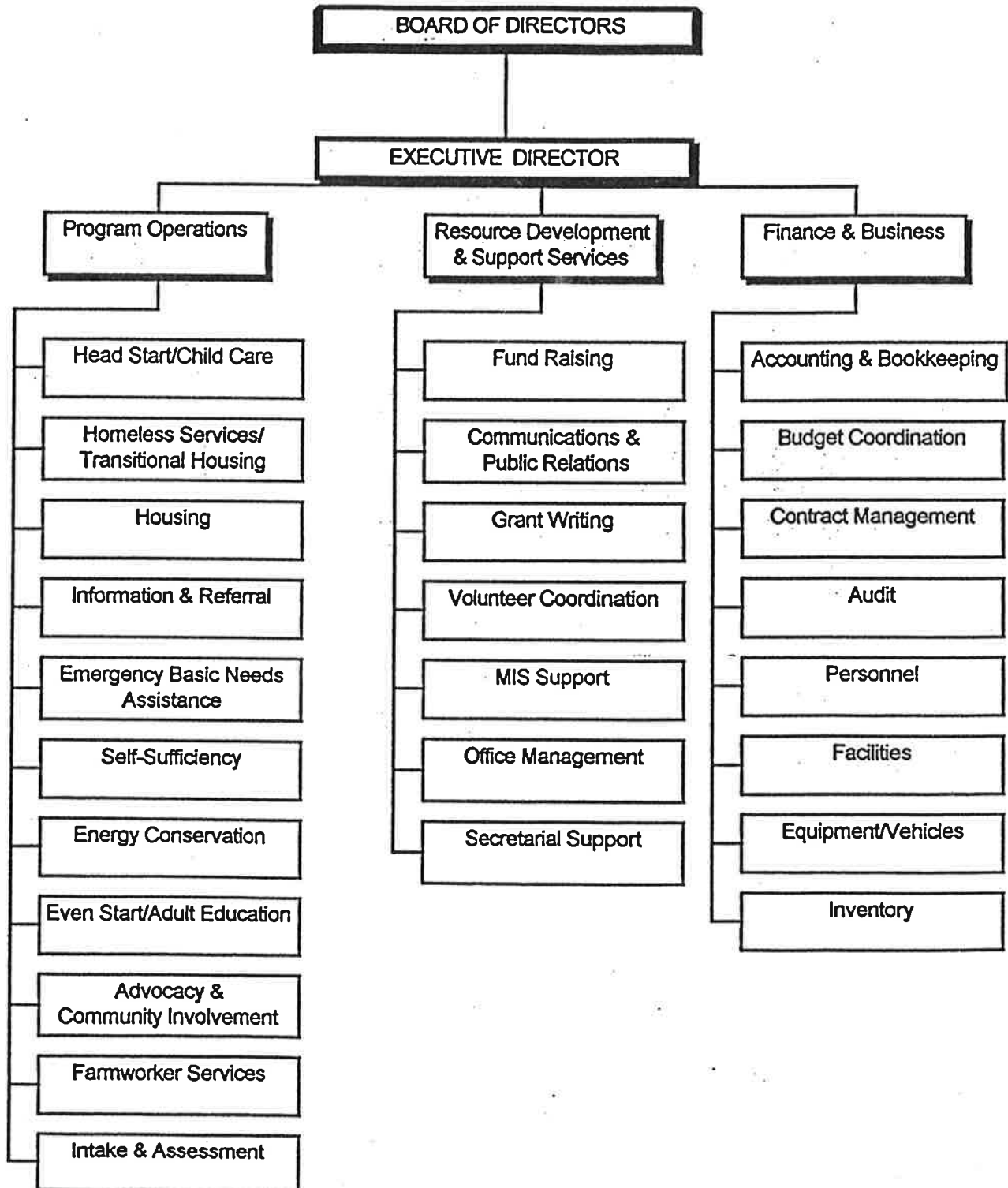
1995-1996 ORGANIZATION CHART



1996-1997 STAFF ORGANIZATION CHART



1996-1997 ORGANIZATION CHART



1997-1998 STAFF ORGANIZATION CHART

